

**TBX6 Antibody (Center W158)**  
**Purified Rabbit Polyclonal Antibody (Pab)**  
**Catalog # AP11675c****Specification**

---

**TBX6 Antibody (Center W158) - Product Information**

Application	WB, FC,E
Primary Accession	<a href="#">O95947</a>
Other Accession	<a href="#">D3ZJK7</a> , <a href="#">P70327</a> , <a href="#">E1BEA8</a> , <a href="#">NP_004599.2</a>
Reactivity	Human, Mouse
Predicted	Bovine, Rat
Host	Rabbit
Clonality	Polyclonal
Isotype	Rabbit IgG
Calculated MW	47045
Antigen Region	143-172

**TBX6 Antibody (Center W158) - Additional Information****Gene ID** 6911**Other Names**

T-box transcription factor TBX6, T-box protein 6, TBX6

**Target/Specificity**

This TBX6 antibody is generated from rabbits immunized with a KLH conjugated synthetic peptide between 143-172 amino acids from the Central region of human TBX6.

**Dilution**

WB~~1:1000

FC~~1:10~50

E~~Use at an assay dependent concentration.

**Format**

Purified polyclonal antibody supplied in PBS with 0.09% (W/V) sodium azide. This antibody is prepared by Saturated Ammonium Sulfate (SAS) precipitation followed by dialysis against PBS.

**Storage**

Maintain refrigerated at 2-8°C for up to 2 weeks. For long term storage store at -20°C in small aliquots to prevent freeze-thaw cycles.

**Precautions**

TBX6 Antibody (Center W158) is for research use only and not for use in diagnostic or therapeutic procedures.

**TBX6 Antibody (Center W158) - Protein Information****Name** TBX6

**Function** T-box transcription factor that plays an essential role in the determination of the fate of axial stem cells: neural vs mesodermal. Acts in part by down-regulating, a specific enhancer (N1) of SOX2, to inhibit neural development. Seems to play also an essential role in left/right axis determination and acts through effects on Notch signaling around the node as well as through an effect on the morphology and motility of the nodal cilia (By similarity).

**Cellular Location**

Nucleus {ECO:0000255|PROSITE-ProRule:PRU00201}.

**Tissue Location**

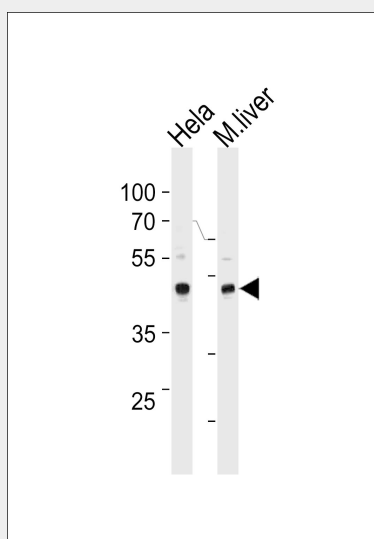
Expressed in fetal tail bud, posterior spinal tissue, intervertebral disk and testis. Also expressed in adult testis, kidney, lung, muscle and thymus

**TBX6 Antibody (Center W158) - Protocols**

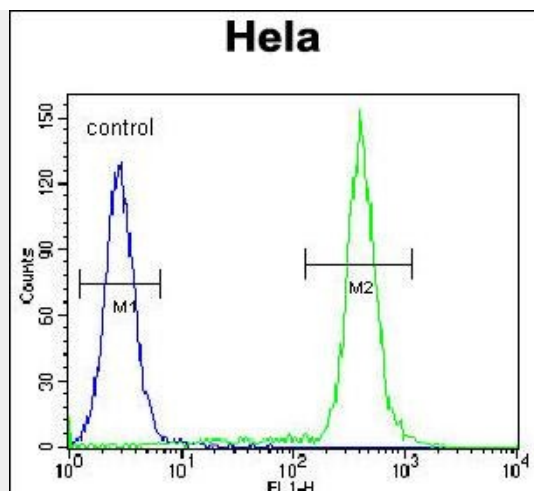
Provided below are standard protocols that you may find useful for product applications.

- [Western Blot](#)
- [Blocking Peptides](#)
- [Dot Blot](#)
- [Immunohistochemistry](#)
- [Immunofluorescence](#)
- [Immunoprecipitation](#)
- [Flow Cytometry](#)
- [Cell Culture](#)

**TBX6 Antibody (Center W158) - Images**



TBX6 Antibody (Center W158) (Cat. #AP11675c) western blot analysis in HeLa cell line and mouse liver tissue lysates (35ug/lane). This demonstrates the TBX6 antibody detected the TBX6 protein (arrow).



TBX6 Antibody (Center W158) (Cat. #AP11675c) flow cytometric analysis of HeLa cells (right histogram) compared to a negative control cell (left histogram). FITC-conjugated goat-anti-rabbit secondary antibodies were used for the analysis.

#### **TBX6 Antibody (Center W158) - Background**

This gene is a member of a phylogenetically conserved family of genes that share a common DNA-binding domain, the T-box. T-box genes encode transcription factors involved in the regulation of developmental processes. Knockout studies in mice indicate that this gene is important for specification of paraxial mesoderm structures.

#### **TBX6 Antibody (Center W158) - References**

Fei, Q., et al. Spine 35(9):983-988(2010)  
Ghebranious, N., et al. J. Bone Miner. Res. 23(10):1576-1583(2008)  
Farin, H.F., et al. J. Biol. Chem. 282(35):25748-25759(2007)  
Papapetrou, C., et al. Genomics 55(2):238-241(1999)  
Yi, C.H., et al. Genomics 55(1):10-20(1999)